



Energy Wall[®]
insulated siding

energyWall

Splendor and Substance

energyWall Insulated Siding

holds the promise of elegance
and performance. *energyWall*

Insulated Siding provides the
ultimate in strength and durability
for protection, and beauty that
endures. You'll be coming home
to the best when you come home
to *energyWall Insulated Siding*.

STYLE

- Distinctly elegant; impressively textured
- Four color palettes offer 21 stylish color choices

PERFORMANCE

- Enhanced panel is engineered to be exceptionally rigid and straight
- Double staggered nail hem provides twice the nailing surface of standard siding
- $\frac{3}{4}$ " bottom lap – 25 percent larger than standard siding – for the ultimate in locking integrity
- Panels resist dents, scratches and hail damage
- Our Armor Coat™ system protects your color against the sun's intense rays, providing years of enjoyment ♦

ENVIRONMENT

- Vinyl Siding is 100% recyclable
- Home Innovation – NGBS Green Certified

♦ Level of Armor Coat™ depends on richness and brightness of color

FEATURES



25% Larger than Industry Standard

Extends a full $\frac{3}{4}$ " from the nail hem, creating deeper shadow lines and a fuller, three-dimensional appearance.

20% Thicker than Industry Standard

Panels lie snug against the wall and reduces surface irregularities, providing a smooth, uninterrupted sightline.

Style. Design.



START UP TO 193 MPH

QUALITY

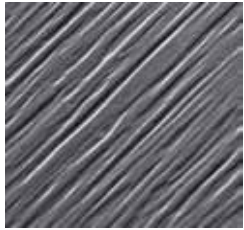
- Meets or exceeds industry standards for ASTM D3679
- Meets VSI standards for product and color
- Produced in a third-party ISO 9001 certified facility, assuring strict adherence to manufacturing and quality standards

MAINTENANCE

- Limited Lifetime Warranty
- Easy care convenience
- Never needs painted or refinished

PRODUCTION

- Made in the U.S.A.



Deep Cedar Emboss

Captures all the authentic texture and charm of natural cedar (but none of the inherent problems).



Double Staggered Nail Hem

Engineering combined with durability makes installation efficient for exceptional wind resistance.



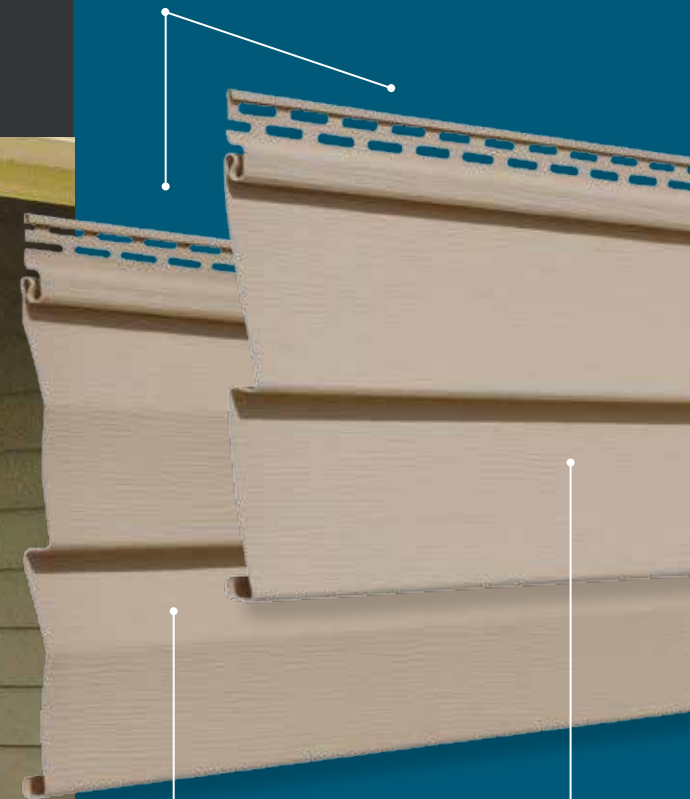
Tuff-Lock™

Locks every panel above firmly to every panel below for superior integrity.

Performance.



Reinforced Nail Hem



Available Profiles:

Double 4

Dutchlap 5

insulation

Make Your Home More Energy Efficient with Neopor® Thermal Insulation

There may be an energy leak in your home that is costing you money every day! Heat bypasses the pink insulation in your wall cavity and transfers through the wooden studs, allowing energy to leak through your walls. This process is called thermal bridging.

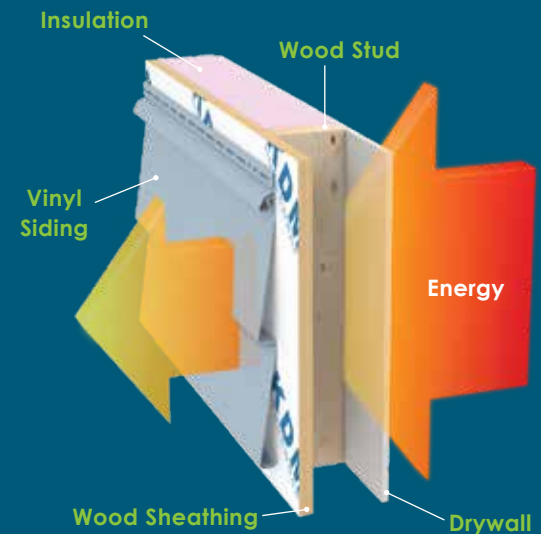
Nearly 25% of your home's wall is made up of these studs that typically are not insulated, so it's like having one wall of your home with no insulation.

The best time to add insulation to the walls of your home is when new siding is installed. In fact, the U.S. Department of Energy says "When new siding is installed, it is a good idea to consider adding thermal insulation under new siding."*

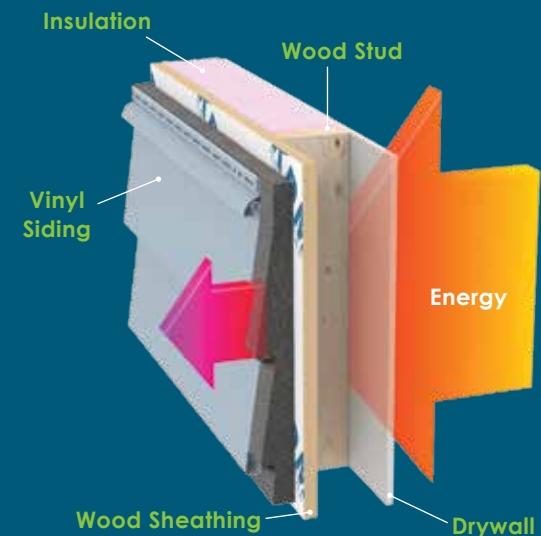
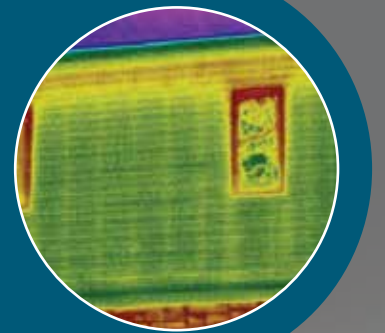


Neopor® Thermal Insulation contains high-purity graphite particles which reflect radiant heat, significantly improving insulation capacity compared to traditional EPS insulation. Neopor wraps your home in an energy saving blanket of insulation, keeping heat inside in the winter and outside in the summer.

* Source: Department of Energy and Oak Ridge National Laboratory, Insulation Fact Sheet 2008



BEFORE NEOPOR®
Thermal imaging reveals two energy leaks: yellow lines where energy escape through studs, and red at the top of the wall where cavity insulation has settled over time.



AFTER NEOPOR®
Thermal imaging reveals that the wall has turned a cool blue. Energy loss through studs and the top of the wall is no longer visible.



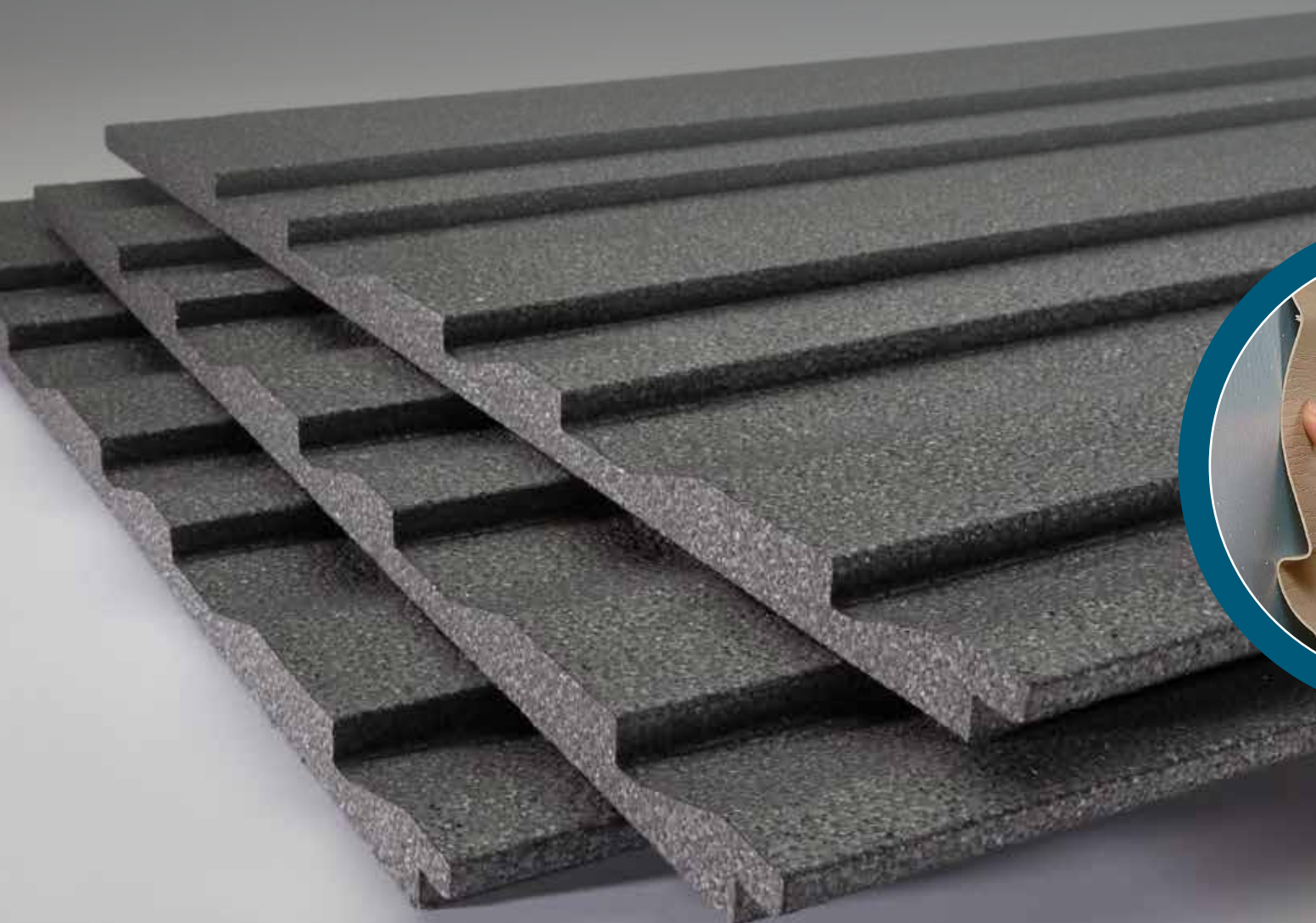
Saving energy is only half the story.

Neopor® Thermal Insulation fills the gap behind vinyl siding for improved durability, appearance, and more.

While vinyl siding offers many options to make your home more beautiful, adding contoured Neopor® thermal insulation to the siding panel provides additional value and options that were never possible with traditional vinyl:

- Provides additional support to the siding panel, maintaining a perfectly straight appearance over time.
- Eliminates waving, sagging, shifting and warping associated with traditional vinyl siding.

- Significantly improves durability by eliminating the hollow void behind vinyl siding, serving as a shock absorber against impact.
- Manages moisture with a permeability rating of up to 3.5, helping protect your home from mold and moisture damage.
- Deters termite infestation with a built-in termite control agent.
- Protected by a transferable, Lifetime Limited Warranty, one of the strongest in the industry.



WITH NEOPOR®
Eliminates the hollow void behind vinyl siding, providing increased support and durability

Foam insulation acts as a shock absorber for the siding



WITHOUT NEOPOR®
Hollow void between the wall and the siding leaves vinyl susceptible to damage

color palette

							
White Birch 02	Classic Sand 11	Warm Sandalwood 17	Sunny Maize 22	Harbor Stone 44	Soft Willow* 41	Basket Beige* 46	Slate Blue* 47
							
Graphite Grey* 49	Artisan Clay* 61	Meadow* 82	Topaz^ 51	Java^ 52	Seagrass^ 79	Twilight^ 80	Keystone^ 85

* Premium colors made with Armor Coat™ UVA

^ Elite colors made with Armor Coat™ Plus

** Paramount colors made with Armor Coat™ Advanced

Color representation may vary from actual product color.

PARAMOUNT COLORS

				
Canyon Brown** 81	Heritage Red** 87	Countryside Green** 88	Hampton Blue** 89	Grey Flannel** 90



Seamlessly complement your home's exterior.

EnergyWall Vinyl Soffit is made of impact resistant vinyl and features a positive locking system, for simple installation and years of homeowner satisfaction.

- Beautiful colors in a low luster matte finish
- Full range of ventilation configurations
- Panel design engineered for rigidity and sag-free performance
- All EnergyWall panels are backed with a limited lifetime warranty



Available Profiles:

10" Double 5: Full vent vinyl soffit

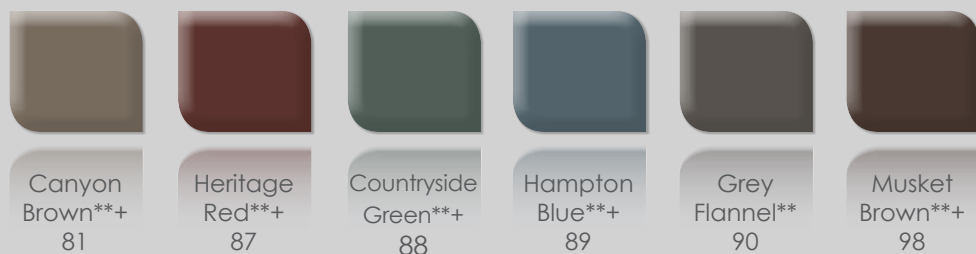
10" Double 5: Solid vinyl soffit

Also Available In:

12" Triple 4: Solid vinyl soffit

12" Triple 4: Center vent vinyl soffit

12" Triple 4: Full vent vinyl soffit



* Color Made with Armor Coat™ UVA
 ^ Color made with Armor Coat™ Plus

** Color made with Armor Coat™ Advanced
 + Warranted for soffit use only

Color representation may vary from actual product color.



energywall soffit

ENERGY

